



# iPin Laser Ruler Pro

## Step by Step Calibration Guide



1. Attach the Laser Ruler to the back of the smart phone.  
Get the measurement with the included ruler card:
  - Center of the phone camera lens to center of the phone.



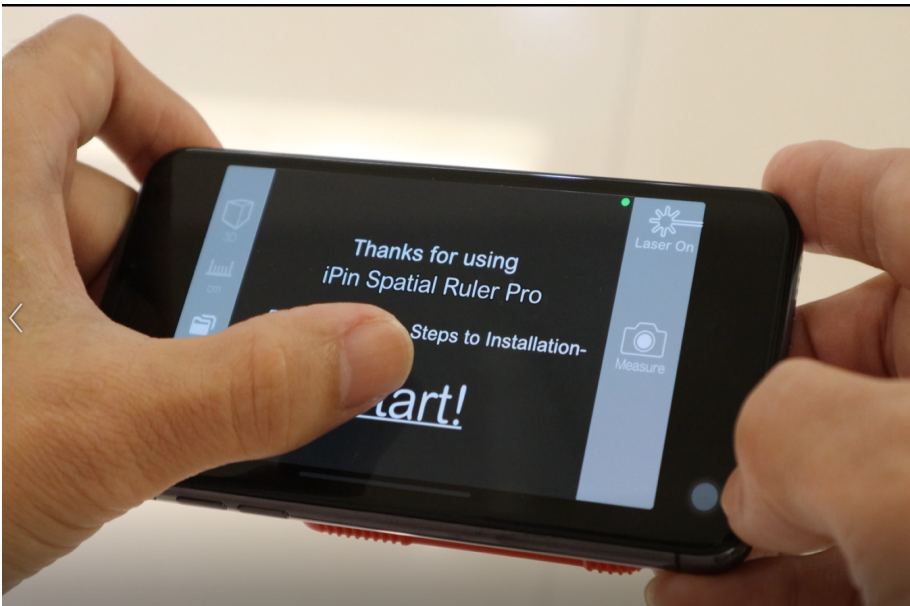
2.1 Open the App and click on the “Setting”



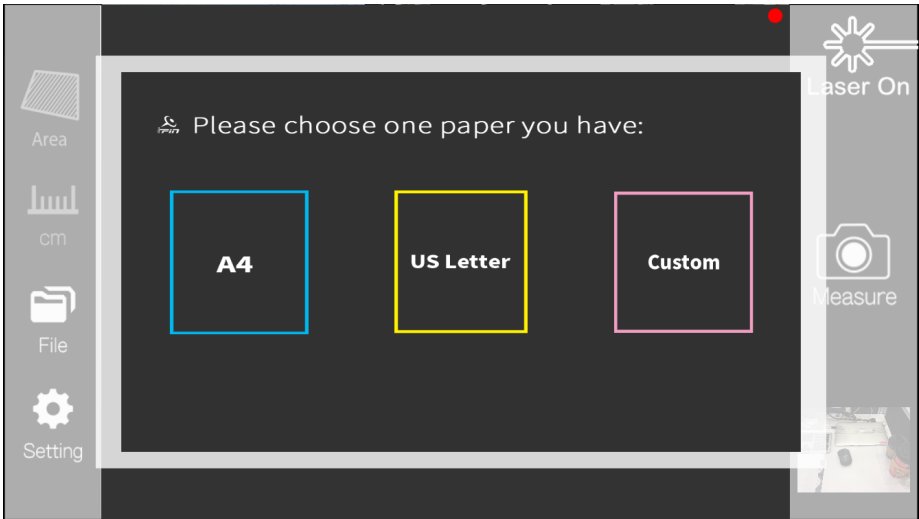
2.2 On the Setting page, click on “Calibration”



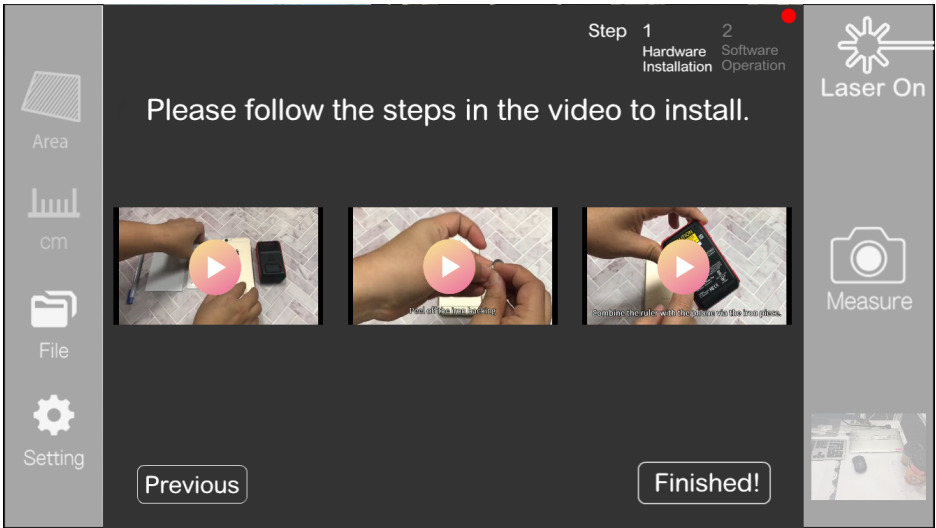
2.3 Click “Start” to start calibration



3.1 Choose a paper size that you use as reference on the this screen.

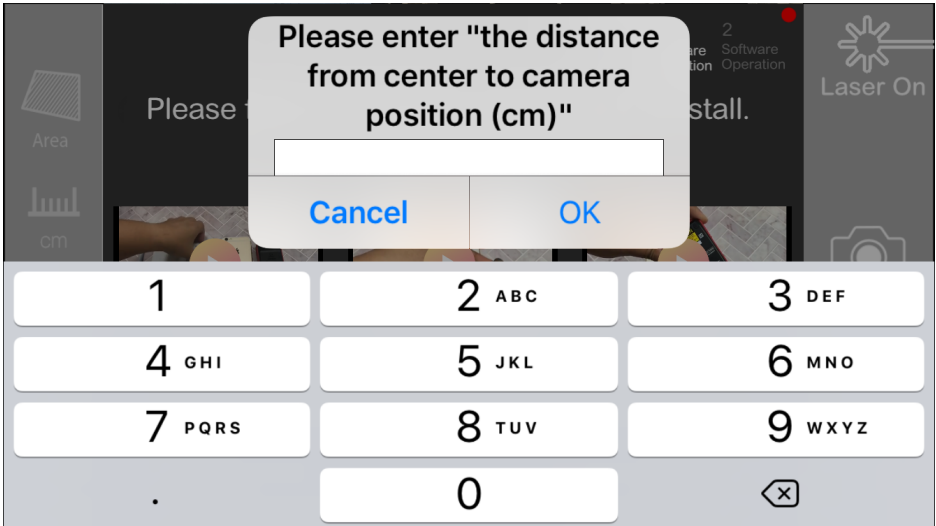


3.2 View the instruction videos. To skip, click “Finished”



3.3 Enter the length from the center of the phone camera’s lens to center of the phone.

Then turn on the Laser Ruler and check the bluetooth is on if haven’t done so.



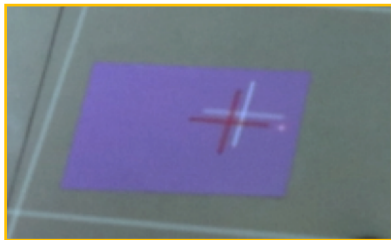
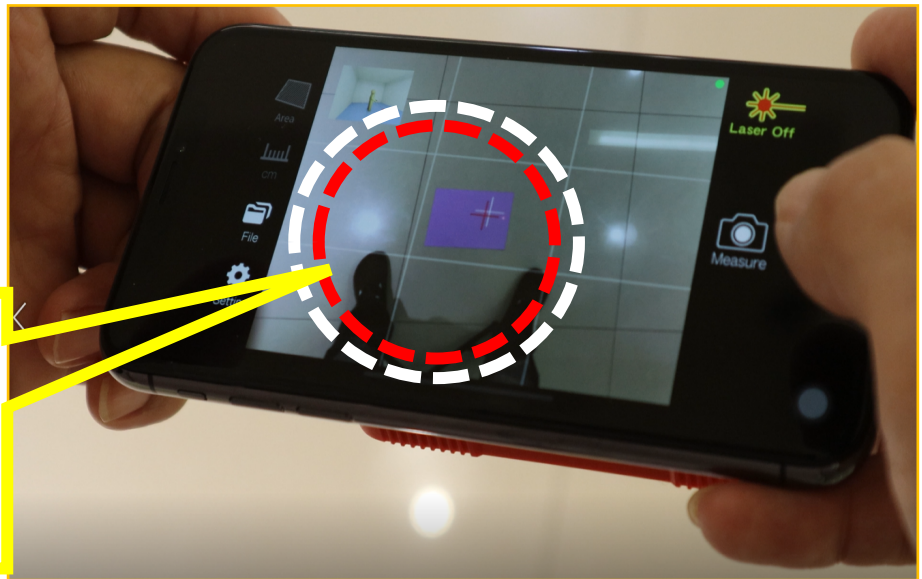


4.1 Follow the instructions step by step, watch the video first.

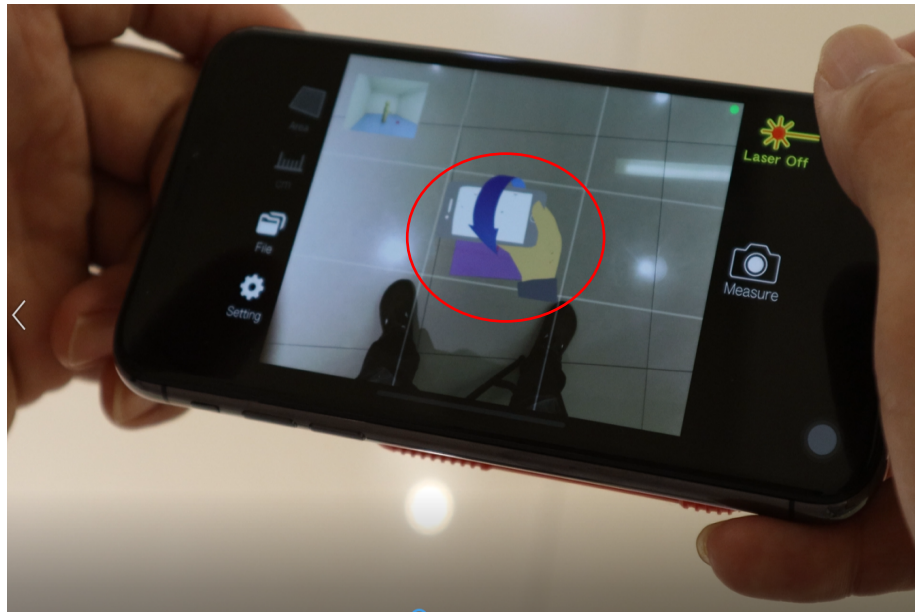
- Photo here showing A4 size paper on the floor

To skip or after video, click "**take the photo**"

4.2 See the reference paper on the screen. At this time, a red and a white cross **automatically** appear on the phone screen. A laser dot from the ruler shots on paper at the same time.



4.3 Tilt the angle back and forth slightly holding your camera, the red cross should be adjusted to overlap with the white cross, and a GREEN cross will appear on the screen once aligned. If not, the adjustment icon as shown here will appear when trying to click "measure".



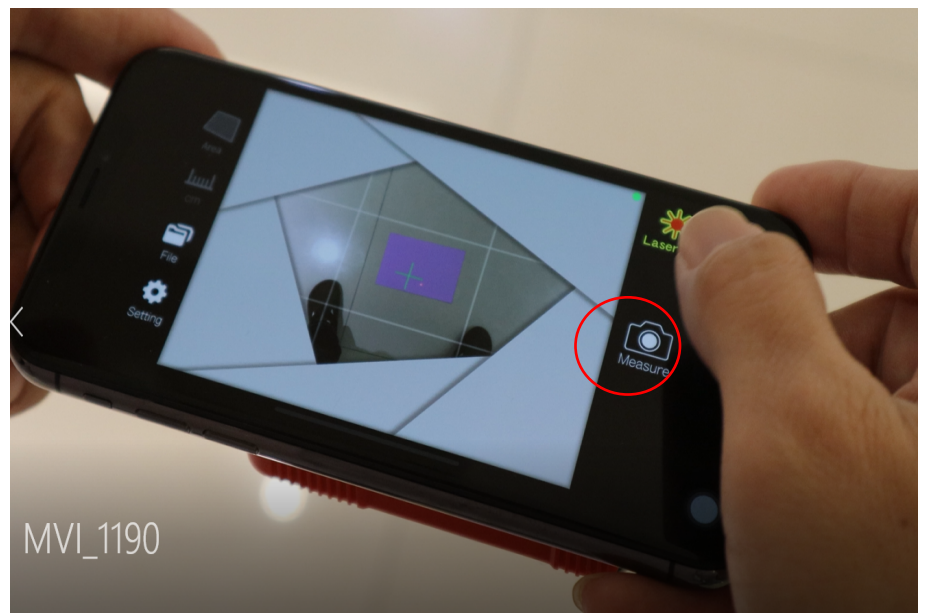


5.1 When perfectly aligned, the red&white crosses disappear and the GREEN cross shows up.



5.2 When seeing the cross turns green, click the “Measure” button to take a photo.

Photo cannot be taken without seeing the GREEN cross.

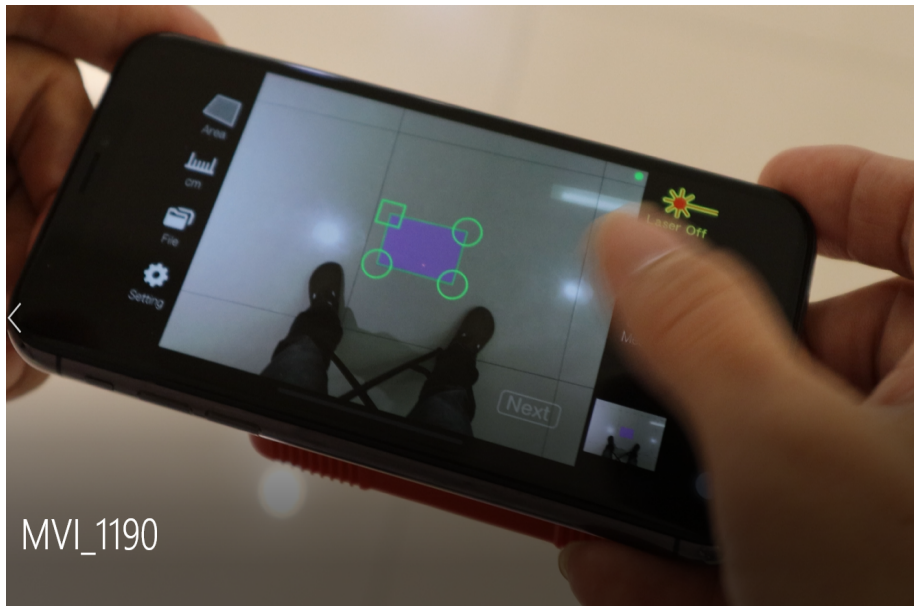


5.3 On the taken photo, a small blue circle **automatically** marks the laser dot on paper and a magnified glass shows up to enlarge the view of the center target laser dot. Click “Next” step.

\*If the blue circle does not mark on the red laser dot, please click on the laser dot on screen, the blue circle will move to the laser dot; you may also drag the magnified glass to center target the cross on the laser

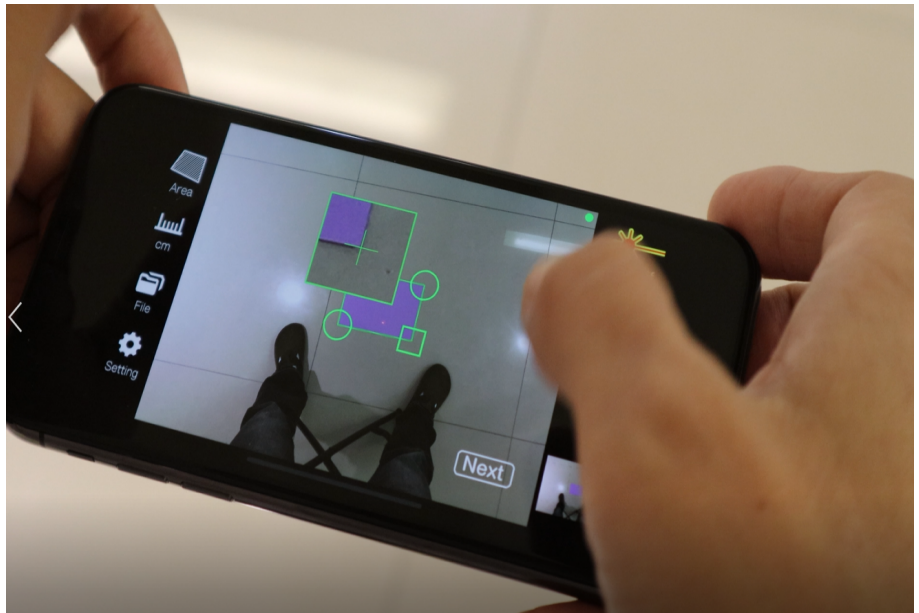


6.1 The four corners of the A4 size paper will be automatically recognized by the four measuring points.



MVI\_1190

6.2 If the four corners are misaligned to the measuring points, tap each point with your finger and move it to each corner of the paper. You can fine tune the position of each corner in the magnified glass.



6.3 When each measuring point matches sharp to each paper corner, click "Next".

Press Ok in the dialogue box to complete the calibration process



MVI\_1190